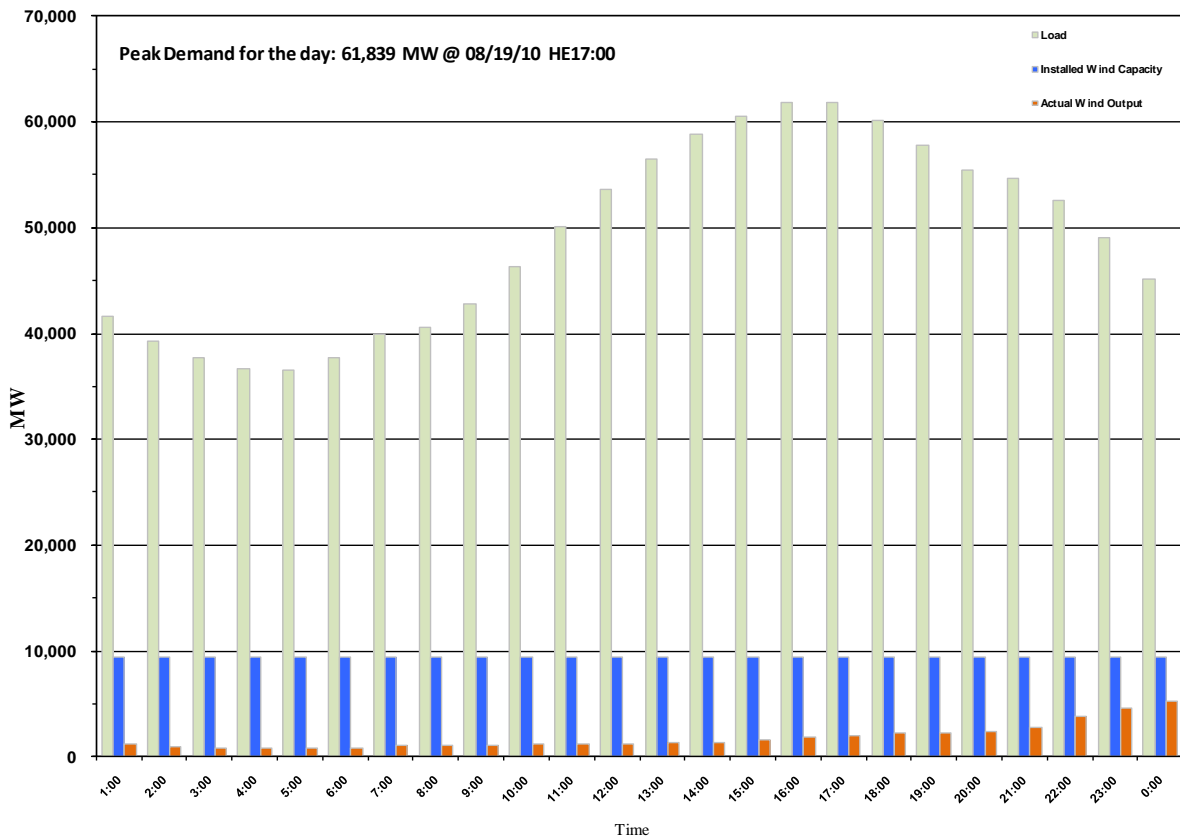




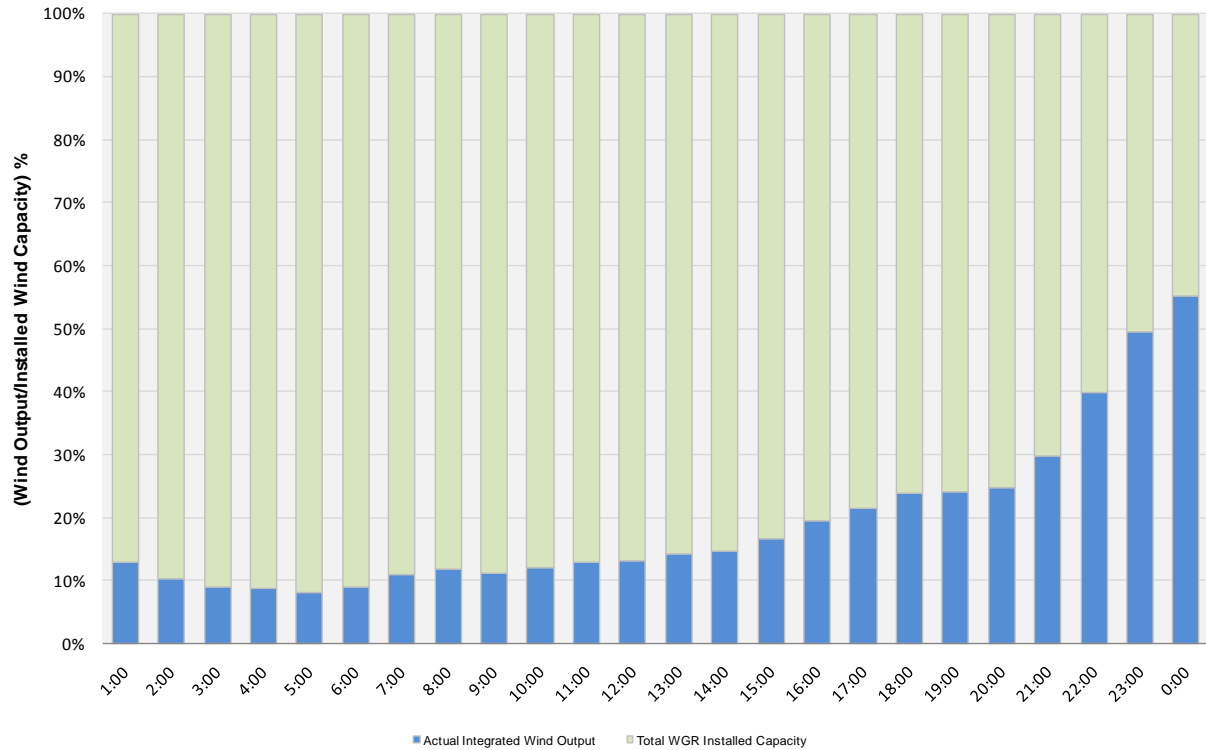
ERCOT Grid Operations Wind Penetration Report: 08/19/10

Peak Load **61,839MW**
Load Peak Hour **17**
Wind Record 06/12/10 **7016 MW**
Max Wind value **5415 MW**
Wind Peak Hour **23:39:32**
Wind Penetration % **12.14**

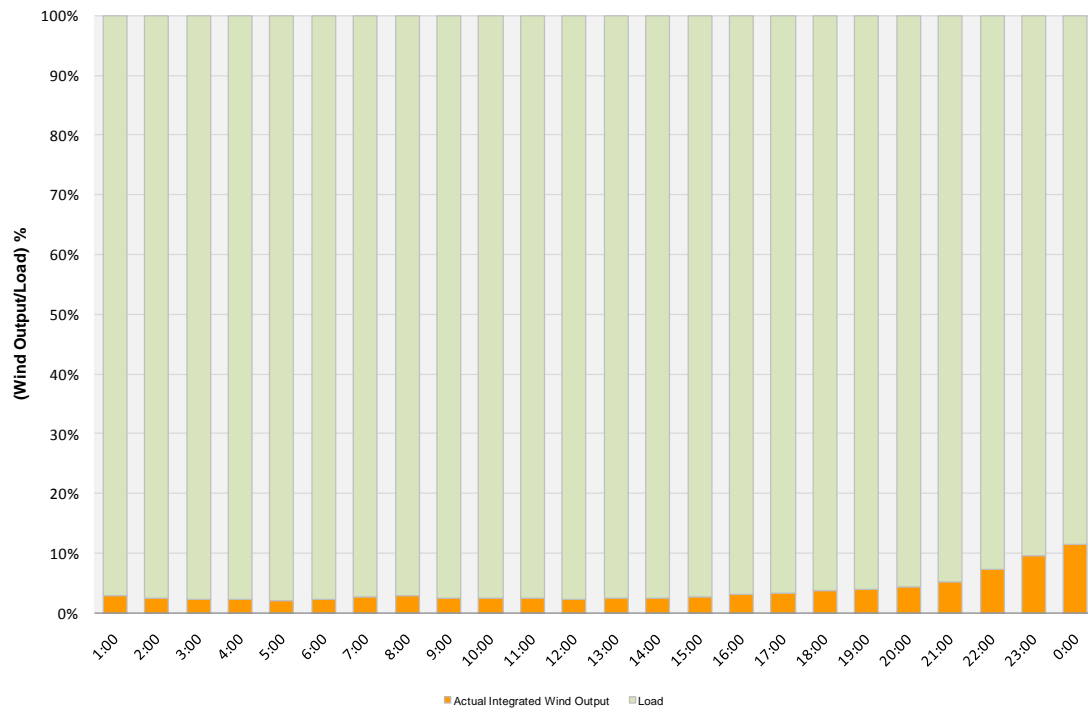




Actual Wind Output as a Percentage of the Total Installed Wind Capacity 08/19/2010



Actual Wind Output as a Percentage of the ERCOT Load 08/19/2010





ERCOT Load vs. Actual Wind Output 08/12/10 - 08/19/10

